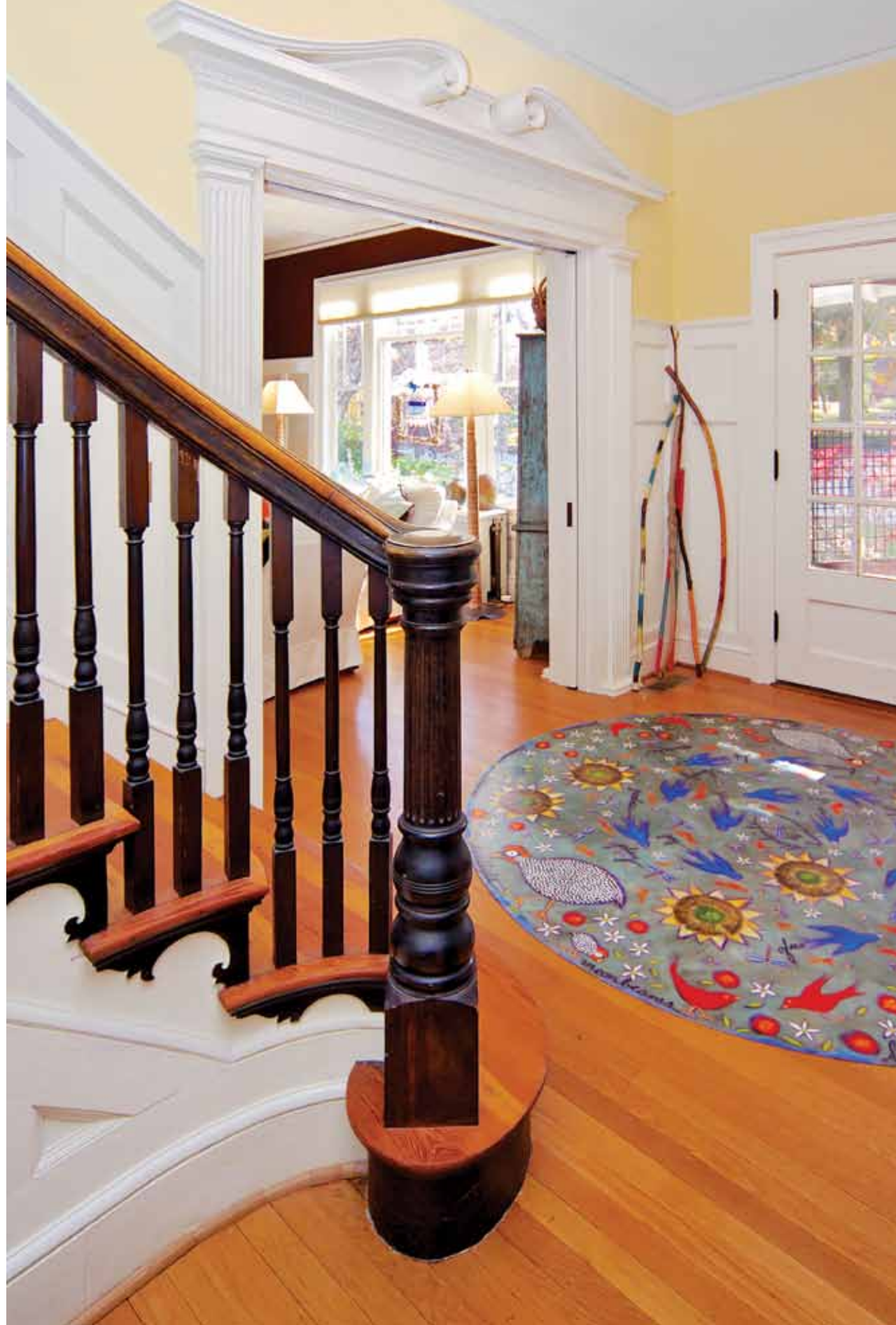




A Brilliant Bungalow

A homeowner treasures architecture and art in her early 1900s bungalow.



☺ When Kathy Cooper was looking to move her family into a historic neighborhood in Winston-Salem, North Carolina, the artist knew she needed three bedrooms and a place where she could work.

What she didn't anticipate was how smitten she'd soon be with her home's masterful millwork, glorious fixtures, and bountiful glow. "The house had 13 broken windows when I bought it," Kathy recalls, "but it was so full of light that it felt like the outside was in. It was glorious."

An internationally recognized floorcloth artist as well as the author of best-selling books (see Resources) on the topic, Kathy



From wonderful walking sticks and painted platters to original art and a vibrant hutch, Kathy's eye for design is unmistakable. "I was on a color quest," she recalls of her transition from a log cabin. "It's hard to believe this house was beige when I bought it!"



Fresh, cool teals and blues that tie in with the elaborate floorcloth under the table accent the rich, warm tones of the kitchen's ceiling and floor. Anchoring the island is an antique wooden toolbox layered with beloved hand-painted Italian pottery. On the table, an old oil and vinegar server has new life as a beautiful bud vase boasting a wreath of hydrangeas. Continuing the theme, turquoise glass bottles overflow from the butler's pantry—an exceptional and functional display case.

soon converted the former maid's apartment into a large working studio. She also spent a great deal of time revamping the kitchen, a space that had been only minimally enhanced since the home was built in 1913. Gorgeous heart-pine flooring, Carrera marble, and a ceiling painted the color of terra-cotta were striking updates to the heart of the home, while other treasures of the time, including an original butler's pantry and a water fountain, were lovingly maintained.

Built by a railroad worker, the home's intricate molding and interior colonial arches were likely reminiscent of the decorative passenger cars of that area. High wainscoting blends the open living and dining rooms,





while rich paint tones complement the original fireplace tiles and balance the colorful pop of Kathy's intricate floorcloths.

One of her favorite spaces is the grand east-facing side porch, where color is king and wide eaves provide shelter from the elements. Here, Kathy painted funky furniture to mix and match with her art, employing her philosophy of using color to infuse the home with energy, spirit, and enthusiasm.

No doubt bursting with these things, Kathy's home has become an inspiration for all aspects of her life. "All art has a story, and adding it [to your home] is like inviting a new personality into your home," she says. "What does your art bring? Your answer is what makes your home different. It's what makes it yours."

Rainbow Connection

Kathy's affinity for all things fun and funky makes for a colorful collection of art and objects. On the porch, a hodgepodge of sap buckets complements the vivid floorcloth. Indoors, a whimsical bellhop bearing a box of crackers is a sure conversation starter, while a portrait of a proud rooster combines the room's hues in a distinctive fashion.



Style Idea
What a glamorous way to showcase sentimental shots whether movies stars or family! Same-size prints in simple black frames truly pop against a lime green wall.